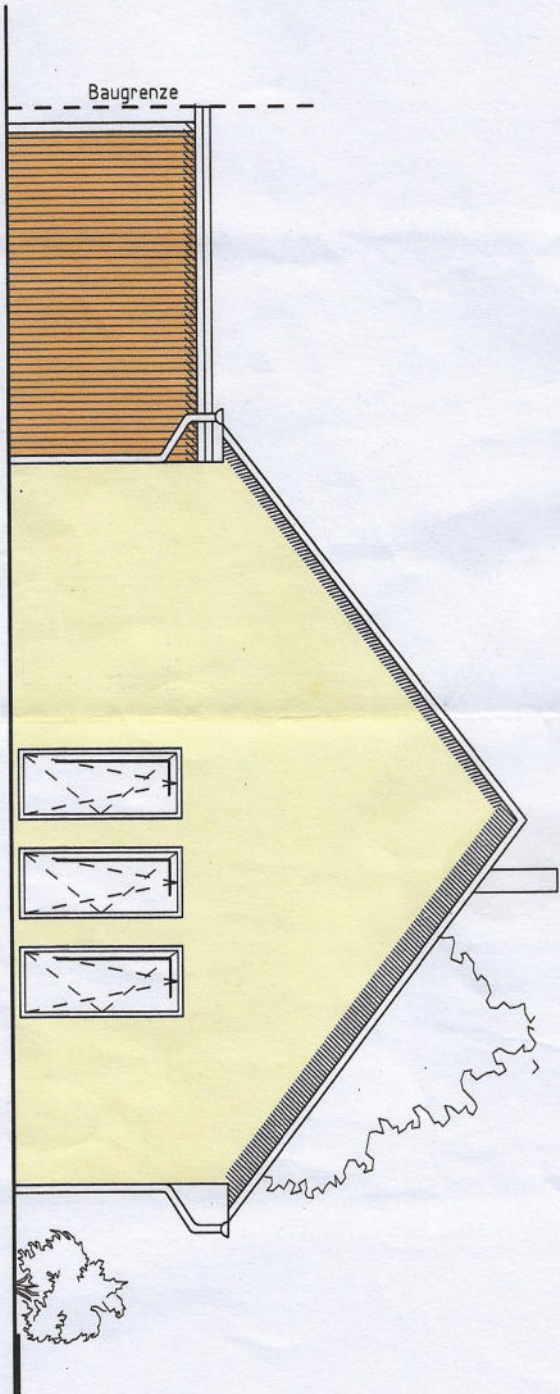
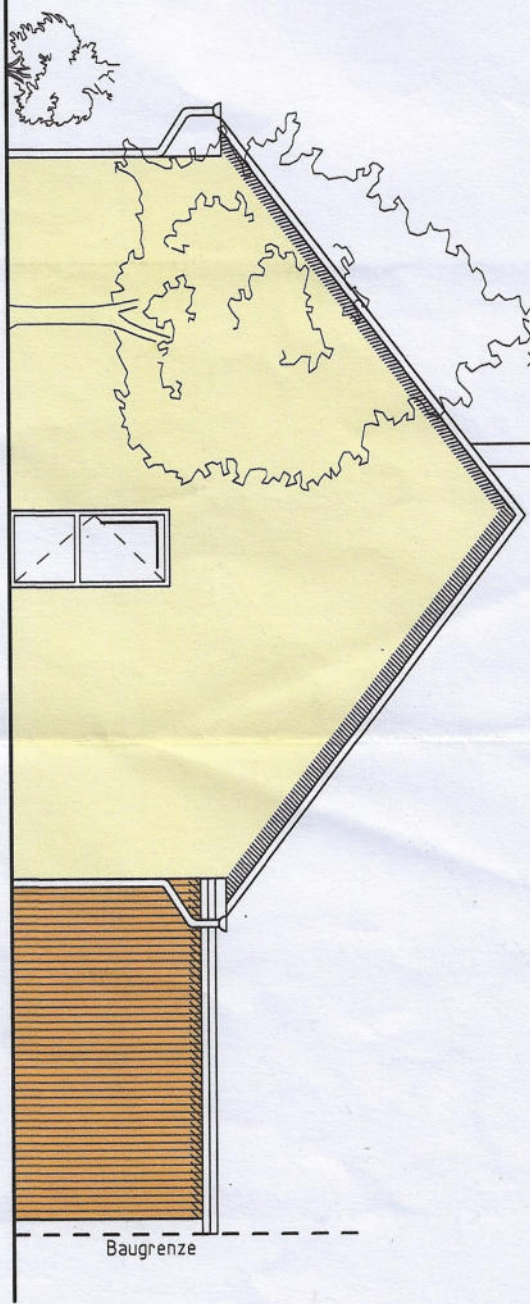


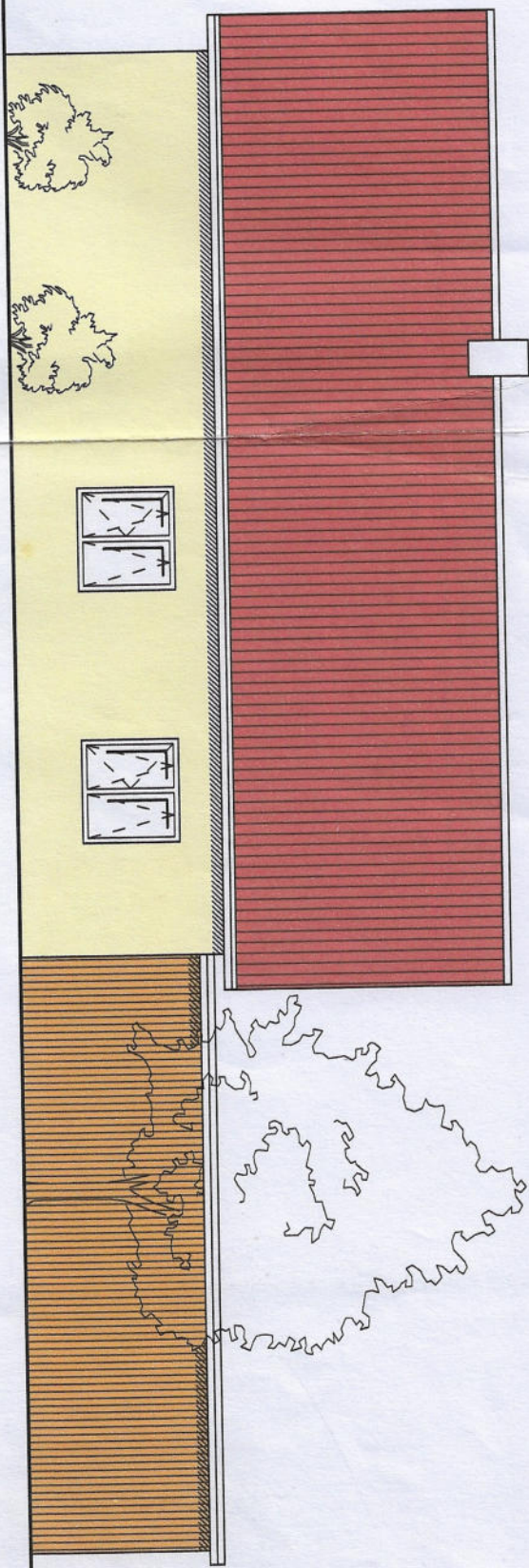
ANSICHT SÜD



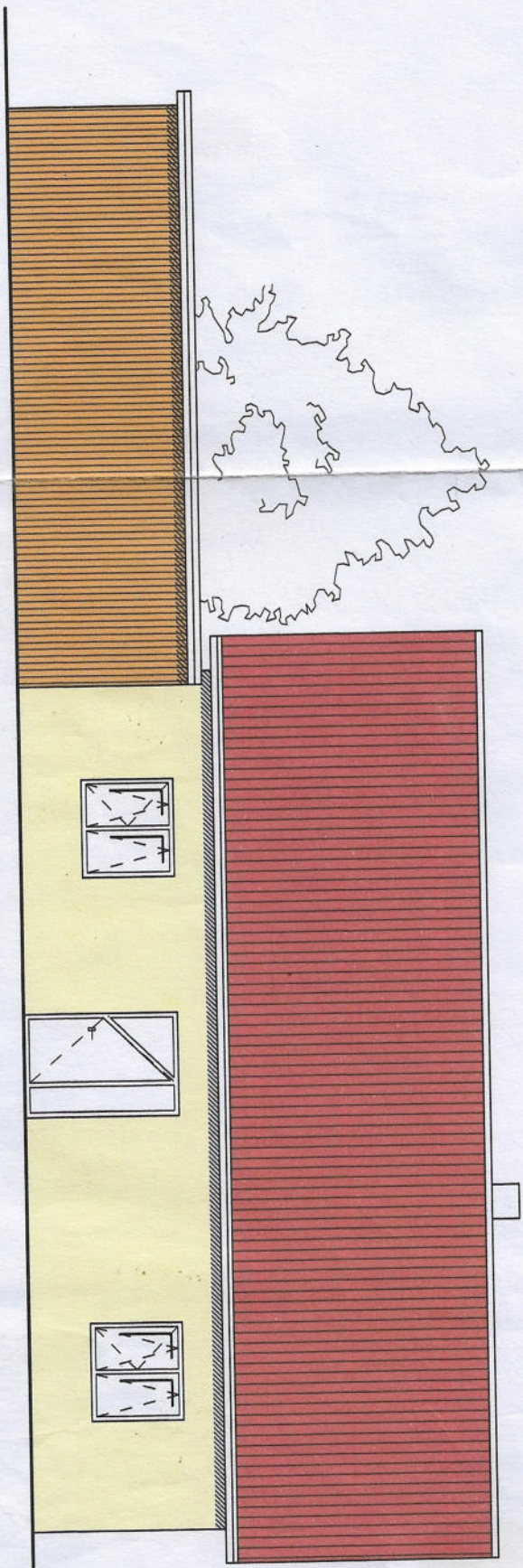
ANSICHT NORD

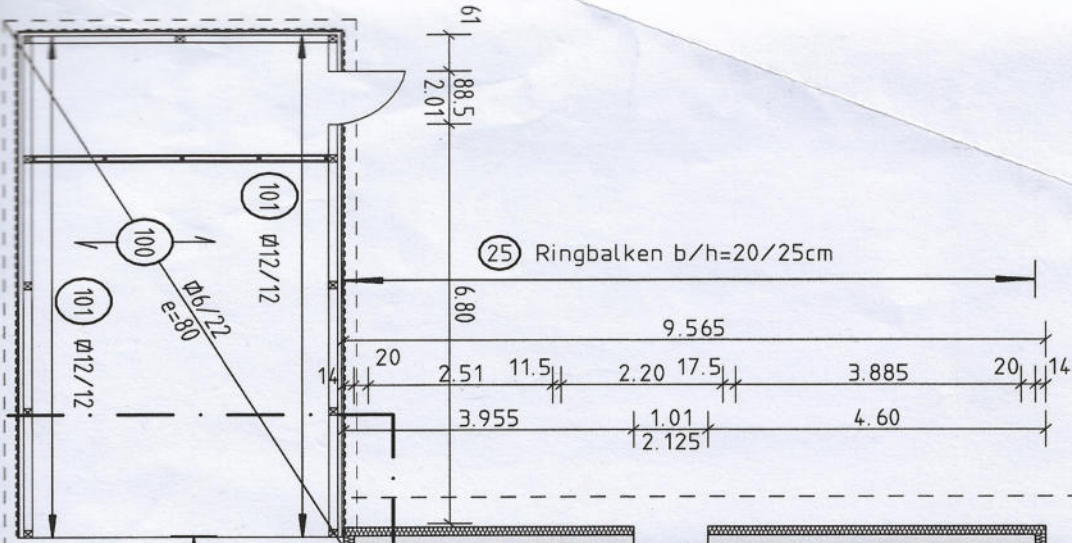


ANSICHT OST

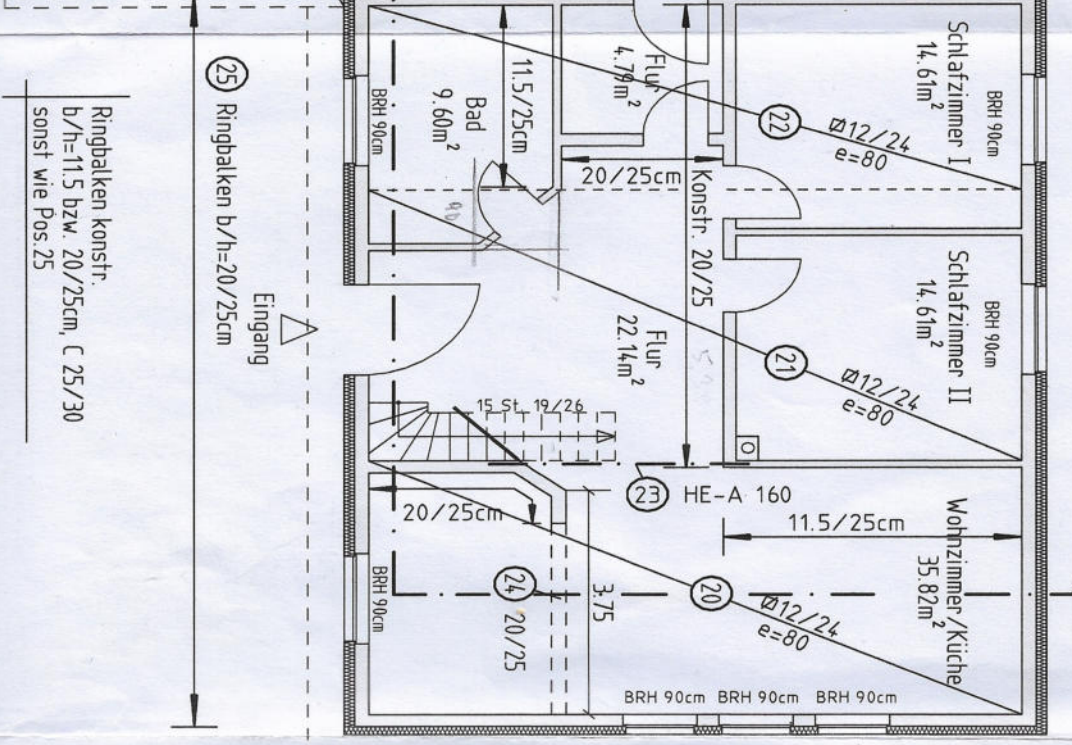


ANSICHT WEST





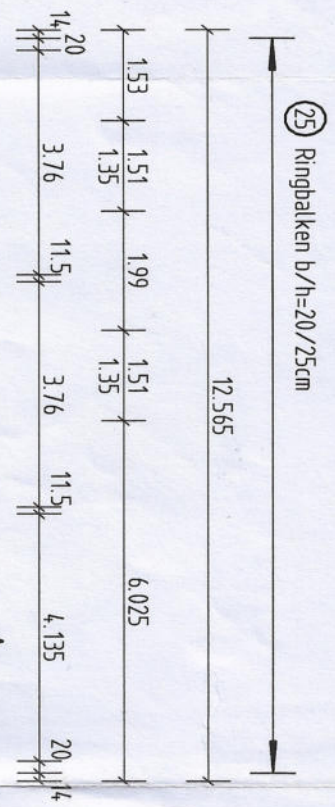
(25) Ringbalken b/h=20/25cm



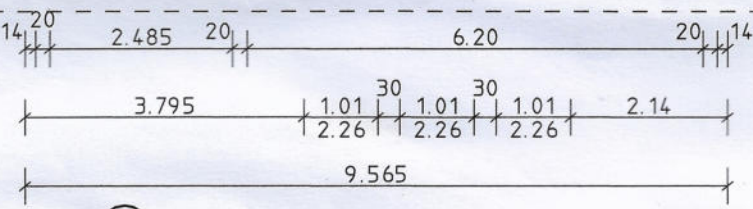
(25) Ringbalken b/h=20/25cm

Eingang

Ringbalken konstr.
b/h=11.5 bzw. 20/25cm, C 25/30
sonst wie Pos. 25



(25) Ringbalken b/h=20/25cm



(25) Ringbalken b/h=20/25cm

10 $\varnothing 8/22\text{cm}$, $e=80\text{cm}$

12.565

11.885

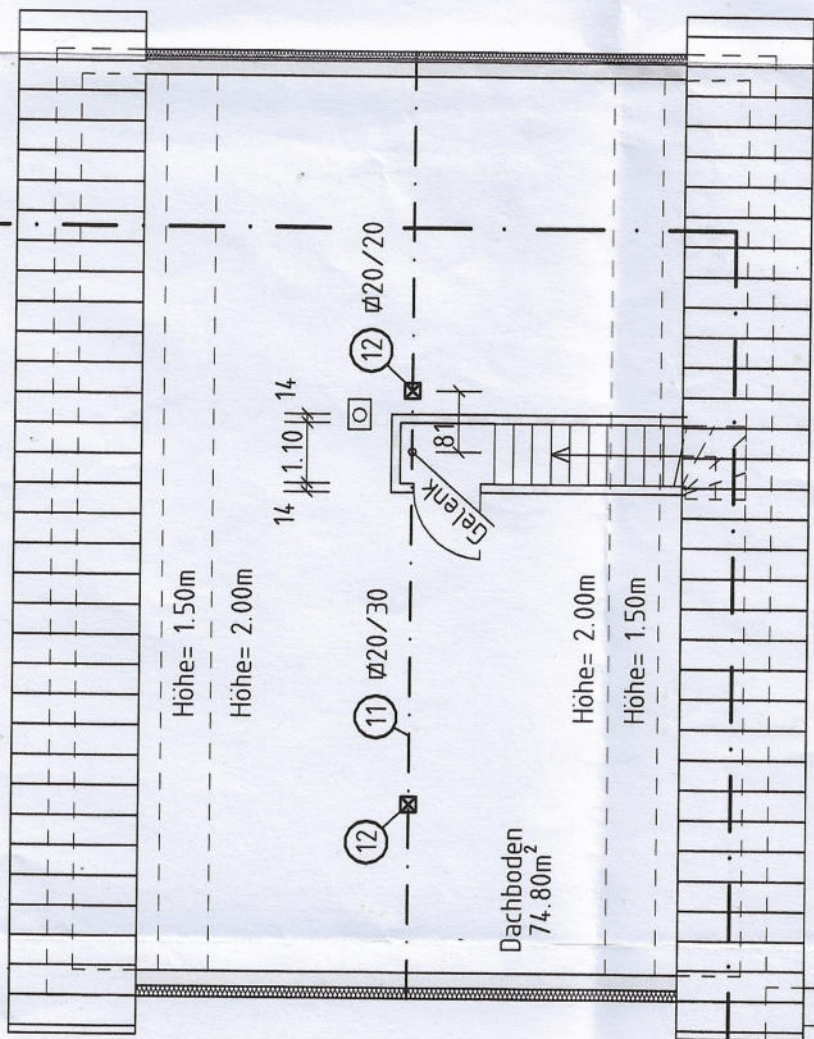
9.565

8.885

A

B4

B4



Höhe= 1.50m

Höhe= 2.00m

Höhe= 2.00m

Höhe= 1.50m

Dachboden
74.80m²

Gelenk

14 || 1.10 || 14

11 $\varnothing 20/30$

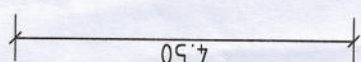
12 $\varnothing 20/20$

GRUNDRISS OG

8.50

A

4.50



POSITIONEN :

- Pos. 10 Pfettendach, Sparren $\varnothing 8/22\text{cm}$, $e=80\text{cm}$
 Pos. 11 Firstpfette $\varnothing 20/30\text{cm}$
 Pos. 12 Holzstütze $\varnothing 20/20\text{cm}$
 Pos. 20 Holzbalkendecke $\varnothing 12/24\text{cm}$, $e=80\text{cm}$
 Pos. 21 Holzbalkendecke $\varnothing 12/24\text{cm}$, $e=80\text{cm}$
 Pos. 22 Holzbalkendecke $\varnothing 12/24\text{cm}$, $e=80\text{cm}$
 Pos. 23 Profilstahl Abfangung HE-A 160
 Pos. 24 Stb.-Unterzug $b/h=20/25\text{cm}$, C 25/30
 Pos. 25 Stb.-Ringbalken $b/h=20/25\text{cm}$, C 25/30
 Pos. 30 Stb.-Streifenfundament $b/h=40/80\text{cm}$, C 20/25
 Pos. 31 Stb.-Sohlenplatte $h=16\text{cm}$, C 20/25
 Pos. 100 Flachdach, Sparren $\varnothing 6/22\text{cm}$, $e=80\text{cm}$
 Pos. 101 Rähm $\varnothing 12/12\text{cm}$
 Pos. 102 Stb.-Streifenfundament $b/h=20/80\text{cm}$, C 20/25

